

## 01 HOTEL EVEREST VIEW

Hotel  
Design Proposal  
Khumjung, Nepal



Nestled within Nepal's UNESCO World Heritage Site, Sagarmatha National Park, Hotel Everest View proudly stands as the world's highest hotel at 13,000 feet. By 2023, the project was still in the design phase, focusing on an extensive interior refurbishment for an enhanced guest experience.

Our design philosophy played a central role in reimagining the hotel's interiors, driven by in-depth research into local crafts, high-altitude construction techniques, historical influences, and locally available materials. This approach ensured that the redesigned spaces authentically represented the rich culture and heritage of the region. Addressing the logistical challenge of the hotel's remote location was crucial. Materials were transported by porters or airlifted by helicopter. Overcoming this, our team prioritized local material sourcing, fostering collaboration with skilled craftsmen and aligning the project with sustainability principles.

As part of the design team, my focus was redesigning the private dining room—a space where Nepal's heritage seamlessly blended with the owner's Japanese roots. Bespoke furniture, reflecting both cultures, contributed to the region's sustainability and prosperity.

This project symbolizes a successful fusion of design, culture, and logistical acumen, transforming Hotel Everest View into a harmonious blend of contemporary luxury and timeless Himalayan heritage.



Initial layout presentation  
Showing the items to remove (yellow), to replace (magenta) and to keep (blue).



The initial visualisation for the dining area theme used the Dhaka fabric representing Nepal and weaving straws which mimic the tatami and baskets of a trekker.

## 02 HARMONY HAVEN

Private Apartment  
Interior Design  
Singapore



Situated in the prestigious waterfront district, our luxury freehold development stands as a beacon of sophistication on prime freehold land. The interior project, completed and handed over in 2023, transformed this residence into a haven of refined elegance.

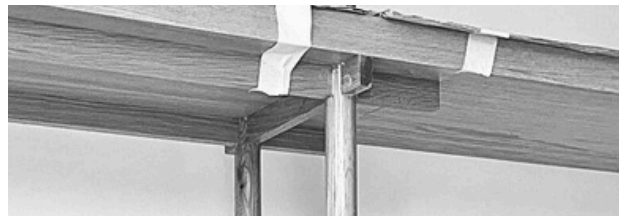
In response to the client's preference for Japanese/Korean aesthetics, we curated an interior layout for a lady with her pet cats. The apartment design encompasses a master bedroom, a tea area on the balcony, a guest room, a study room, and an open-concept living space leading to the heart of the room, the counter bar. Most spaces feature loose furniture for a light, airy ambience.

My role involved detailing the design of built-ins and creating construction drawings. A meticulous focus on joinery details, inspired by traditional Asian wood construction, brought the client's vision to life. The overarching concept emphasized light and shadow. Frosted glass and translucent window blinds were strategically used to filter harsh external light, casting a soft ambient glow across the interior. This not only created a serene atmosphere but also shielded the space from the visual noise of adjacent buildings.

The completion of this project represents a harmonious blend of luxury, cultural influence, and meticulous design, offering a tranquil retreat in the heart of the waterfront district.



*Photo was taken by Goy Architects team*

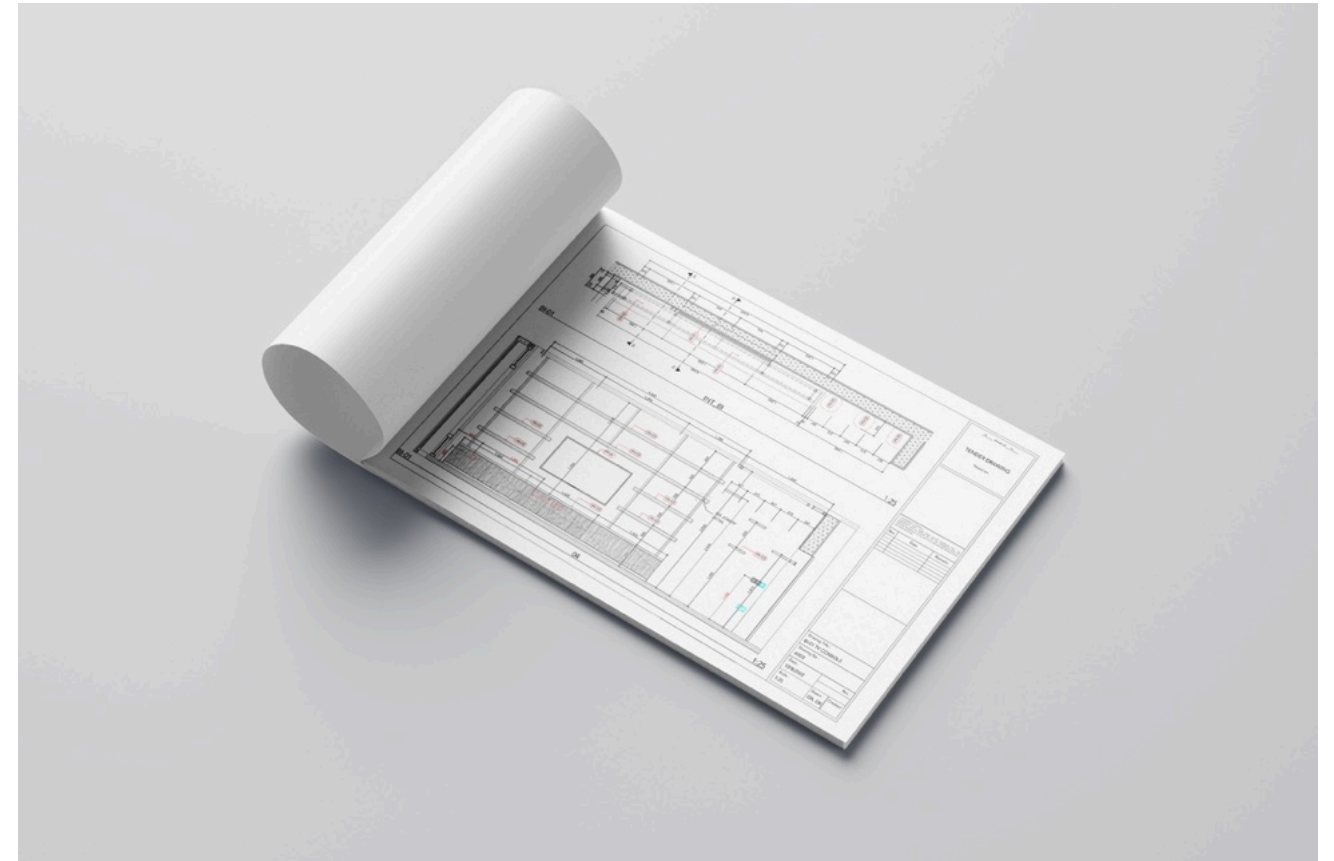


I played a key role in creating the tender drawing documents for the carpenters, guiding them in executing the build-in elements of the project.

Additionally, I took charge of designing custom furniture pieces tailored to the project's unique requirements, ensuring a seamless blend of functionality and aesthetics within the project.

**Rooms**

- A Living/dining
- B Balcony
- C Master bedroom
- D Guest bedroom
- E Study room
- F Tea room



### 03 PLAY@PUNGGOL

Public space/Installation  
Competition  
Punggol, Singapore



During my tenure at Goy Architects, I led a competition project that challenged us to use given timber creatively, constructing a captivating public area. The concept took inspiration from local wildlife, specifically otters, as they resonated with the community. The design evolved to embody the playful narrative of otters finding friends.

The benches, shaped like two otters swimming, were crafted with a keen focus on ergonomic considerations for children. The intention was to create a space where they could lean, sit, jump, or even climb, ensuring a dynamic and interactive experience.

In keeping with the natural surroundings, we opted for a minimalistic color palette to seamlessly integrate the installation into its environment. My contributions extended to crafting the competition board layout and producing illustrations for axo plans and renderings. This project not only showcases our innovative use of timber but also demonstrates our commitment to creating public spaces that engage and harmonize with the local community.



## 04 BESPOKE FURNITURE

Collaborating with the global design team, I craft unique furniture for each project, consistently sourcing interesting materials and identifying skilled local artisans.



During my tenure at Goy Architects, I led a competition project that challenged us to use given timber creatively, constructing a captivating public area. The concept took inspiration from local wildlife, specifically otters, as they resonated with the community. The design evolved to embody the playful narrative of otters finding friends.

The benches, shaped like two otters swimming, were crafted with a keen focus on ergonomic considerations for children. The intention was to create a space where they could lean, sit, jump, or even climb, ensuring a dynamic and interactive experience.

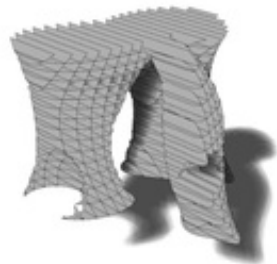
In keeping with the natural surroundings, we opted for a minimalistic color palette to seamlessly integrate the installation into its environment. My contributions extended to crafting the competition board layout and producing illustrations for axo plans and renderings. This project not only showcases our innovative use of timber but also demonstrates our commitment to creating public spaces that engage and harmonize with the local community.



Our team has created bespoke furniture, and I've played a key role in generating ideas, coordinating with local makers, and managing the shipping process.

## 05 DIGITAL EXPLORATIONS

Installations  
Academic Assignment  
Edinburgh, UK



A standout in the Digital Fabrication course and year-end digital design exhibition, the tower comprises twelve unit blocks conceived through the exploration of facade structure and interior space.

Our journey began digitally in Rhino, where we meticulously designed all the blocks. This digital approach allowed visualisation before scripts were sent to 3D printers and laser cutters, ensuring precision and creativity converged in the final product.

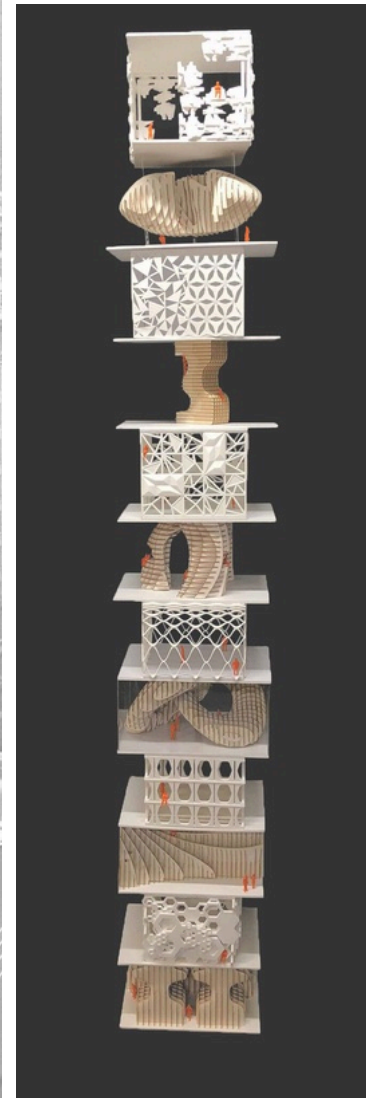
In the transition from digital to physical, we seamlessly translated our ideas into tangible models, carefully incorporating the theme that unified the entire tower. This process not only showcased our technical skills but also highlighted our ability to harmonise design concepts from inception to execution.

Notably, my involvement extended beyond the tower. I played a key role in crafting the exhibition poster, contributing to the comprehensive showcase of our digital design endeavours.



**Poster for the end of the course show (Left)**  
- I and Mimi Hattori were responsible for the collage.

**Physical model (right)**  
- The model was the product of group work. The aim was to learn about space through the use of the Rhino programme.

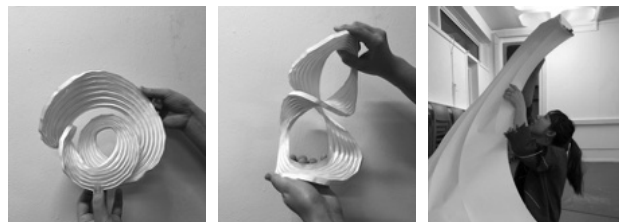




This acclaimed project, acknowledged by The School of Architecture and Landscape Architecture at the University of Edinburgh, delved into parametric design for an award-winning installation. The research spanned lightweight structures, tensile elements, and innovative paneling strategies, navigating constraints of cost and time.

The heart of our concept lay in crafting a structure that not only stood as a frozen moment in time but also exhibited kinetic movement within its still form. This exploration of juxtaposing motion and stillness aimed to create a visually arresting installation, capturing the essence of both dynamism and tranquillity.

Our design philosophy drew inspiration from the world of curved crease sculptures, where natural equilibrium unfolds as the paper is folded along these curves.



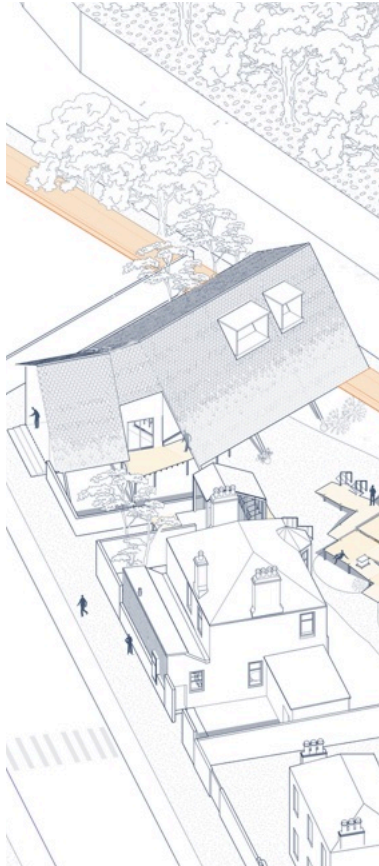
This transformative process breathed life into the installation, turning a flat sheet into a dynamic and captivating structure.

Installed in the Adam House hallway from December 2018 to February 2019, the installation became a focal point of admiration. Beyond the exhibition space, its significance extended to the Academic staff celebration party in 2018, where its recognition underscored its impact and artistic merit.



## 06 GREEN INITIATIVE

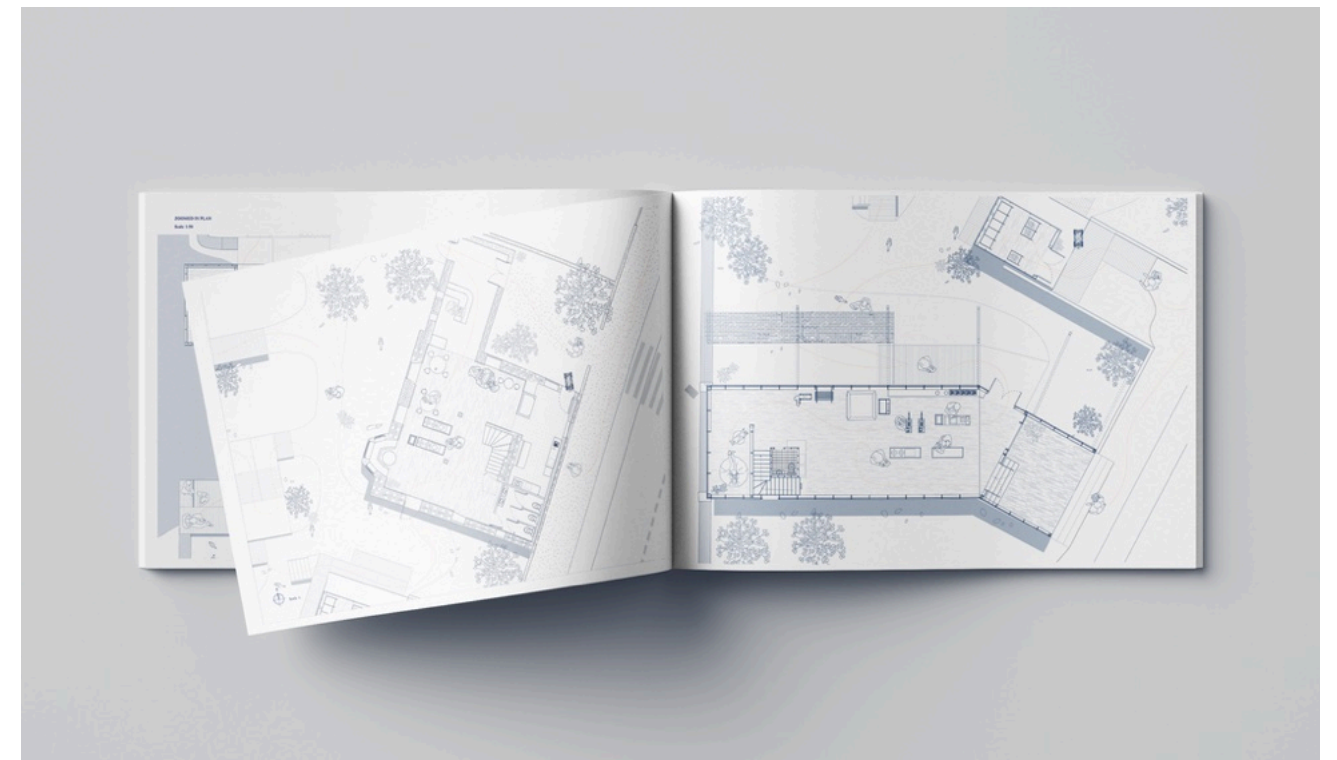
Public space  
Academic Assignment  
Edinburgh, UK



The Green Initiative project represents a pioneering effort in environmentally conscious architecture, with the aim of reducing our environmental footprint and promoting recycling within the community. The project's centerpiece is a plastics recycling center designed to invigorate recycling networks and reshape circular economy principles in construction.

The project repurposes a Victorian Villa into a community space, complemented by four extensions that cater to diverse recycling activities. A robust recycling program encompasses PVC waste from the building industry, plastic containers, and product packages, all transformed into new plastic products. The plastic materials manufactured onsite contribute to the construction, forming part of the roof or cladding on the facade.

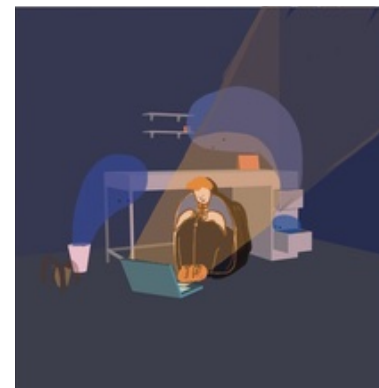
With a focus on exploring local materials, the project seamlessly integrates these resources into the existing site. The specific objective was to cultivate a communal center, inviting people to actively participate in constructing the space. This multifunctional hub offers workshop space and serves as a plastic collection center, fostering community engagement and sustainable practices.



Iso drawings and Plans

## 07 GRAPHIC DESIGN

Architect blends design finesse with illustration artistry in a Facebook internship, creating engaging visuals for a diverse professional audience



Despite my formal training in architecture, my interests have always extended beyond the confines of a drafting table. Illustration, in particular, captivated me. This curiosity led me to seize an internship opportunity with a Facebook page boasting 350k followers.

During this immersive experience, I discovered the art of translating articles into engaging visuals. This went beyond mere drawings; it involved a meticulous consideration of composition, fonts, and text, ensuring a harmonious visual narrative. My process typically commenced with a series of rough sketches, exploring various ideas. Once a concept resonated, I transitioned to Adobe Illustrator, where I refined and developed the sketch into a clean, flat look.

These illustrations were more than just aesthetically pleasing images; they were carefully curated to align with the colour schemes and graphics that resonated with a professional working audience. This dual pursuit allowed me to marry my architectural background with the creative expression found in illustration, creating a unique blend that not only enriched my skill set but also elevated the visual storytelling for the platform's diverse audience.



## 08 OWN COMMISSION / SELF DEVELOPMENT

Versatile Skill Application:  
Driven Learner in Motion Graphics, Layout, and Graphic Design



Driven by an unwavering commitment to self-improvement, I consistently expand my skill set across various domains. In my spare time, I eagerly engage in diverse projects to enhance and apply my capabilities. My endeavours extend from short motion graphics for student commercial projects to showcasing a blend of creativity and technical proficiency. Leveraging layout skills, I venture into crafting social media content, contributing to the creation of eye-catching flyers and brochures.

Furthering my graphic design expertise, I've ventured into the realm of food packaging. From conceptualising designs for nut butter labels to creating visuals for water bottles, I apply my skills to diverse contexts. These self-initiated projects not only highlight my adaptability but also underscore my proactive approach to learning and skill application across a wide spectrum.

**CONTACT**

📞 (+66) 94 615 3888

✉️ kornrawee.chan@gmail.com

📍 Chiangmai, Thailand (Open to relocation)

