

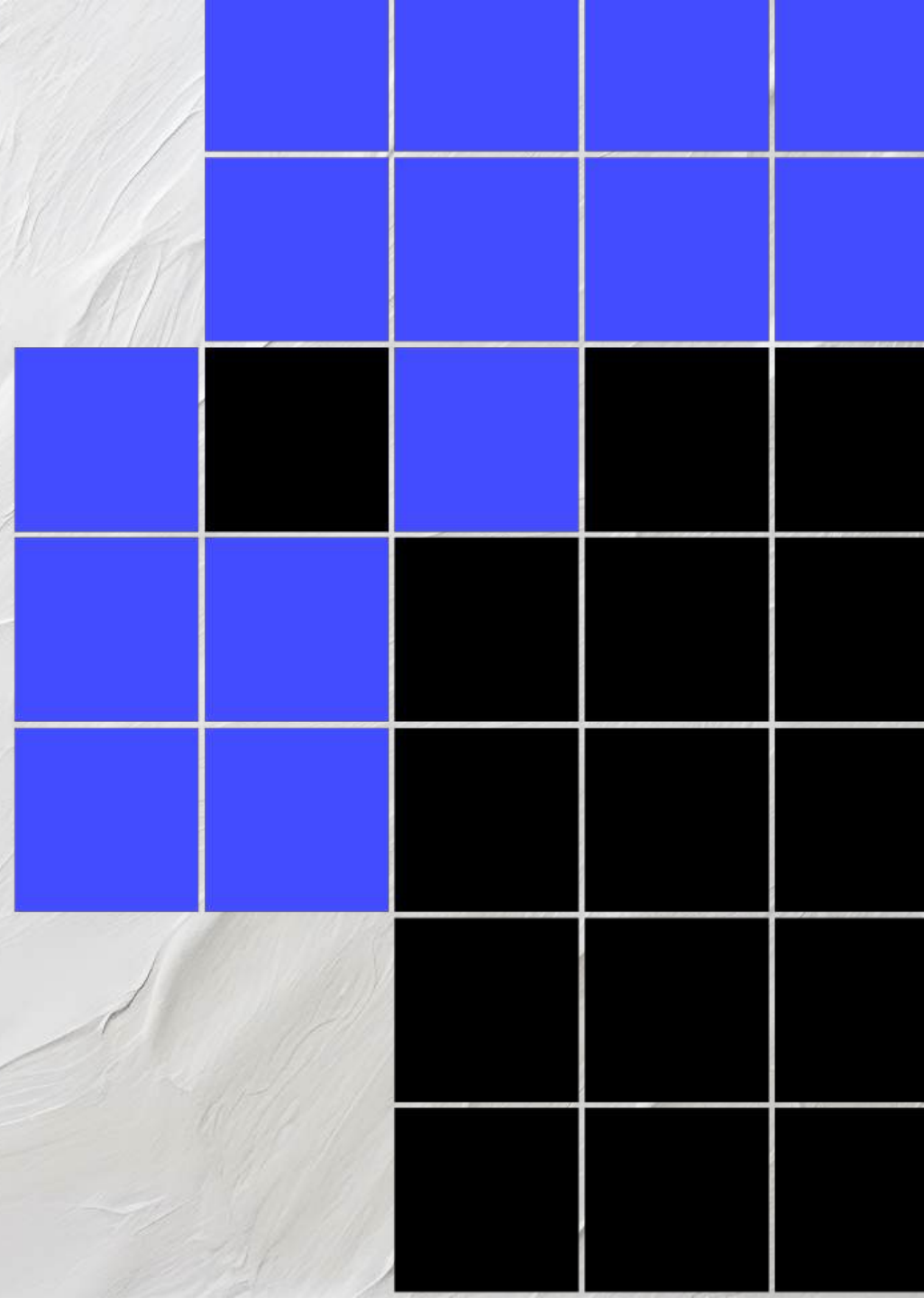
ARCHITECTURE

P O R

T F O

L T O

SI THU MIN HTUT





SI THU MIN HTUT

EDUCATION

Master of Science in Urban Strategy
Diploma in Architecture Technology
Bachelor of Engineering (Civil Engineering)

WORK EXPERIENCE

Design Consultant @ TK contractors PTE. LTD. (Singapore)
Drafter @ Closetrobe Design PTE. LTD. (Singapore)
Freelance Design Consultant @ Soven Architect (Yangon, Myanmar)

TECHNICAL SKILLS

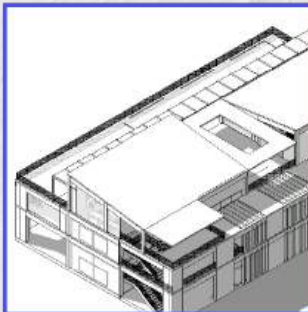


C O N

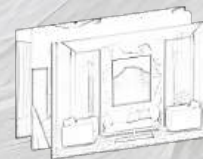
T E

N T

01
ကျမ်းတိုင်
Education Centre
Private School



03
Singapore
Pools



05
Academic
Case Study

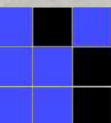


02
BCA Academy
Building F

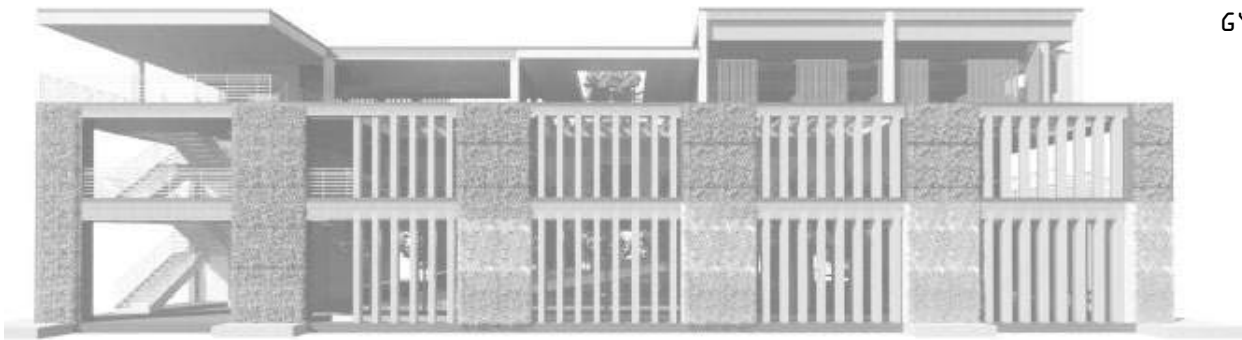
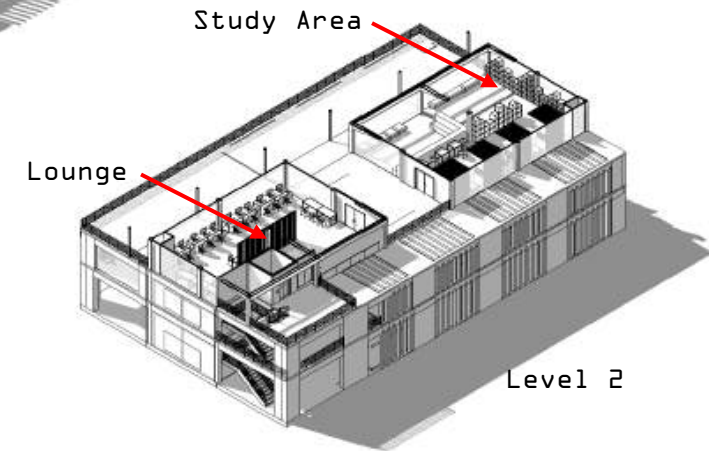
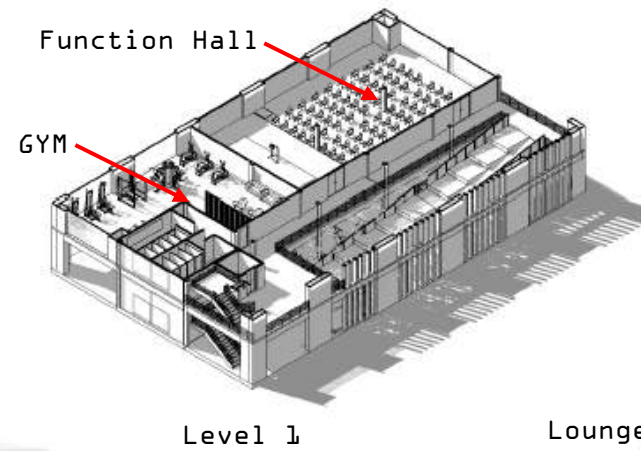
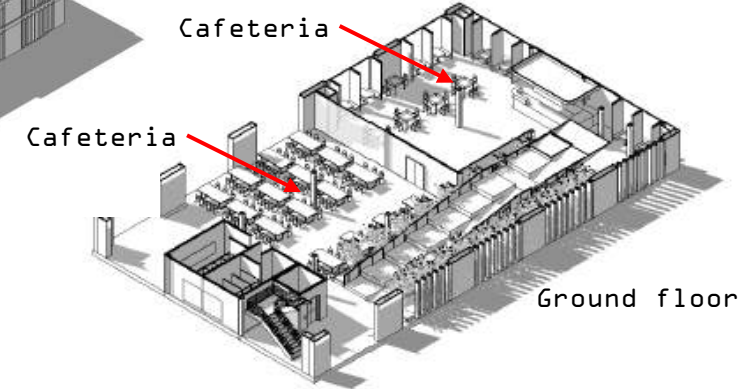
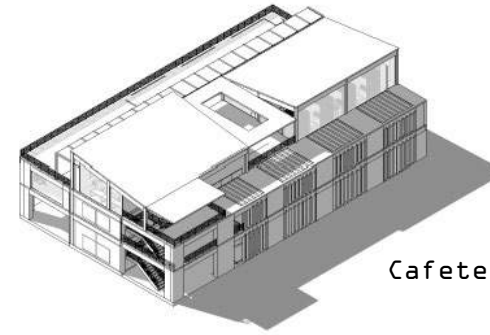


04
Interior Design
Projects

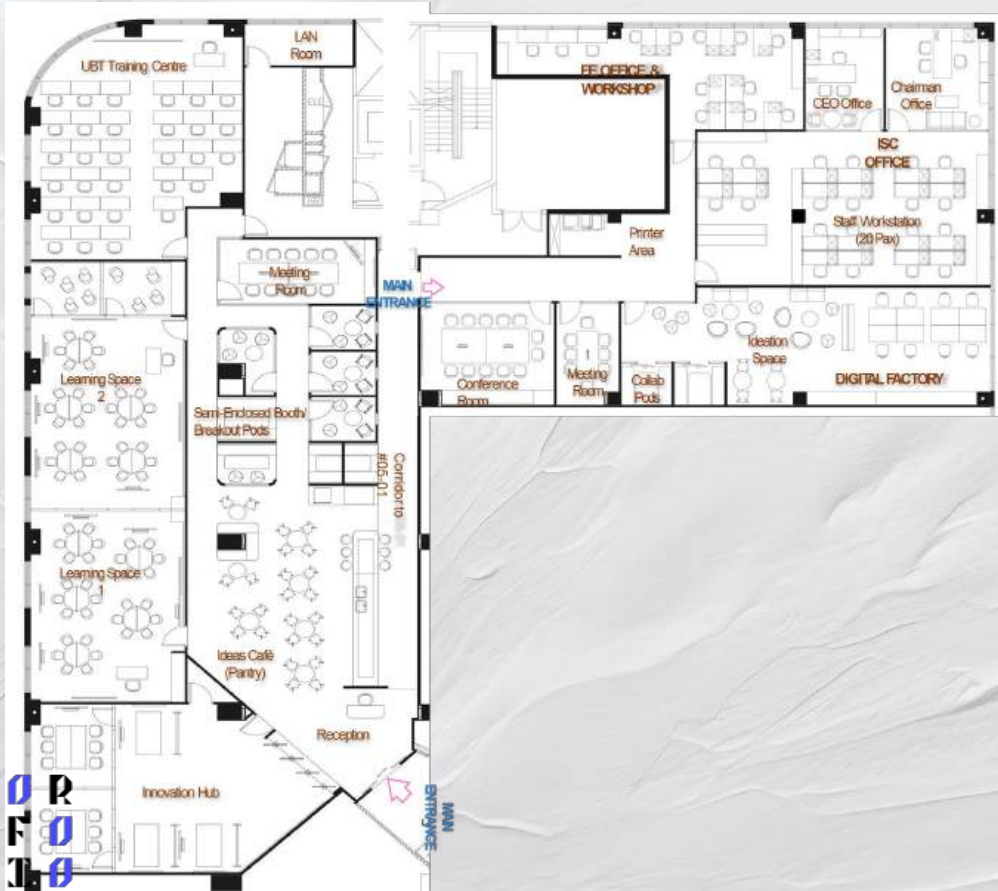
The “ဤမီးတိုင်” Education Centre/Private School creates a contemporary educational space that promotes adaptability, collaboration, and sustainability. It features flexible learning areas, communal spaces, and outdoor retreats. The design fosters creativity and connectivity while prioritizing eco-friendly elements, offering a well-rounded and inspiring environment for students.



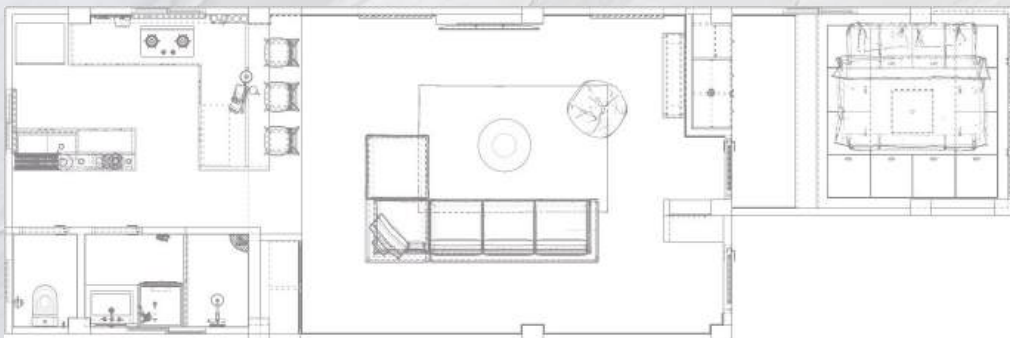
The design focuses on creating a functional and sustainable space that integrates key areas such as a cafeteria, gym, lounge, study room, and function hall. The design emphasizes universal accessibility through ramps and thoughtful layout, ensuring inclusivity for all users especially focused on students. Sustainability is a core principle, with energy-saving strategies and the incorporation of greenery to enhance environmental quality.



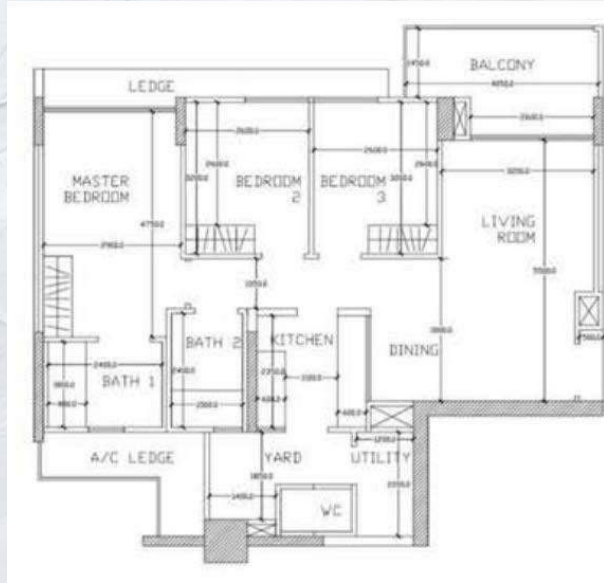
To represent the idea of transformative innovation and collaboration, the space is designed to be a centralized area where different users come together with different ideas, perceptions and intensions. Abstractive geometric lines/shapes/patterns are presented across the spaces as distinctive design elements as the representation to the main concept.



The ideal living space apartment tailored to client needs. Step into a warm and inviting atmosphere, where comfort meets functionality. This thoughtfully designed apartment features a snug living area, perfect for relaxation or entertaining guests.

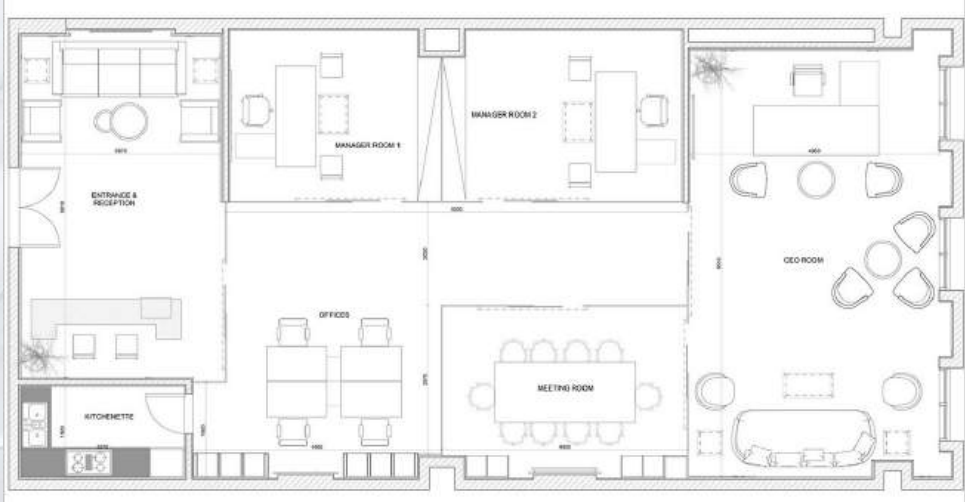


The renovation of this condo entails a complete transformation, with a primary focus on the kitchen and living room area. The objective is to create an open-concept design by removing the wall between the living and kitchen spaces. Which allow the living room to serve as both a comfortable living area and a functional office space.



Private design and build project for local finance office.

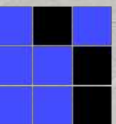
The design emphasize on modernism and luxury through finishes and material used throughout the space.



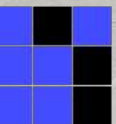
PROPOSED LAYOUT PLAN - SCALE NTS



REFLECTED CEILING PLAN - SCALE NTS

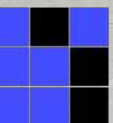


Took care of over 40 interior design projects in the period of being Design consultant. Here are a few render of works.



Final Year Project Roof Garden

The design for the roof garden combines Japanese and Chinese garden styles. The Japanese garden highlights natural landscapes, avoiding artificial decorations and incorporating philosophical aesthetics. The Chinese garden, on the other hand, is enclosed by walls and features ponds, rocks, trees, flowers, and pavilions connected by zig-zag pathways. The layout includes a roof garden, accessible by passenger lifts, adjacent to an indoor amenity area for residents, with facilities like a gym, squash, and table tennis, located on level 4. The garden has multiple seating areas, paths, and a central open area surrounded by trees.

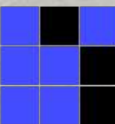


Makkasan MICE arena

The project plans to leverage Makkasan's strategic location, strong connectivity, and historical landmarks to create a vibrant center for tourism, economic growth, and community engagement. Core goals include enhancing transportation, promoting green spaces, providing affordable housing, and preserving cultural heritage. It envisions a thriving, well-connected urban area that supports local and international tourism, stimulates economic opportunities, and upholds sustainable urban planning principles.



- SWOT analysis
- TWOS analysis
- On-Site analysis
- Policy Recommendation



THANK YOU

Contact

WhatsApp's : +66 993450206

Line : 421146796

Email : sithuminhtutbca@gmail.com