

PORT.

FOLIO

RATCHAPHOL SRIVILAI

SELECTED WORK

2022-2024

INTERIOR AND ARCHITECTURE

Content.

Design Under Project

4	Mer Cafe Koh Samui, Surat Thani
8	SASA Beach Cafe Si Chon, Nakhon Si Thammarat
12	Poolsawat Dining Space Koh Samui, Surat Thani
16	Anantara Private Spa Koh Samui, Surat Thani
20	Smilow Cafe b.2 Lang Suan, Chumphon
26	Si Chon Camp Si Chon, Nakhon Si Thammarat
30	Itviset Cafe & Bistro Koh Samui, Surat Thani
34	Landrein Cafe & Co-Working Space Koh Samui, Surat Thani
38	Inthanin Reservation Area Khao Phanom, Krabi

Diploma Project

42	Phuket Entertainment and Recreation Complex Thalang, Phuket
----	---



Mer Cafe.

Year: 2023

Designer: Ratchaphol Srivilai

Type: Renovation

Role: Visualization and Design

Status: Completed

"The Woman Who Fell in Love with Paris" is the inspiration behind this project. *Mer* is a well-known brand in Koh Samui, recognized for its signature copper coffee van stationed at the popular Samui Viewpoint. I received the brief with the concept that the owner had just returned from Paris, inspired by her experiences there.

Now it's time to start designing. The owner envisions a Parisian-style café using her favorite colors: mint green, pastel pink, coral red, and grey teal. The challenge is to blend these shades harmoniously to create a unique and captivating space in Koh Samui that aligns with her vision.

We are incorporating a modern classical interior style into this project, blending several design elements to create a unique, nostalgic feel. Key features include detailed tile work on the coffee counter, UPVC cornices to evoke a sense of classic elegance, and thoughtful use of color throughout various elements. Additionally, we are introducing a gently curved wall to add visual interest and create a more inviting space.



Mer Cafe.

Whatever happens in this project, our main goal is to create something that stands out from the many cafés and bistros in Koh Samui. Each design element we've incorporated is part of an experimental approach, exploring how we can align with the owner's vision and requirements while achieving a unique aesthetic.



SASA Beach Cafe.

Year: 2022

Designer: Ratchaphol Srivilai

Type: Renovation

Role: Visualization and Design

Status: Completed

“Make the Famous to be Famous” is the vision for this project. SASA is part of the ISSARA Group in Khanom, Nakhon Si Thammarat, a place rich in contextual charm and potential for future growth. This context provides an inspiring foundation for our design concepts, as we envision a revitalized space that invites past customers to return and experience something fresh.

Our proposal focuses on expanding the business and establishing a new direction, breathing new life into the overall design to give the space a contemporary, renewed look.



SASA Beach Cafe.

The main concept of this project is to use local materials in ways that feel unique and engaging, transforming ordinary details into something special. These design elements guide our approach, as we aim to blend them seamlessly to create a space that feels both fresh and visually appealing to be that way.

Poolswat Dining Space.

“Just make it look outstanding,” someone told me over the phone, setting the tone for this project’s primary focus: creating a space for a memorable breakfast experience. With that in mind, we’ve developed ideas to make the space feel cozy and homey, evoking the warmth of a morning where you wake up and find something nourishing to start your day. This will be a place where people can come together, share moments, and recharge.

Year: 2024

Designer: Ratchaphol Srivilai

Type: Renovation

Role: Visualization and Design

Status: Completed





Poolsawat Dining Space.

In this project, we're introducing a new color scheme to the design elements, creating a fresh look that pairs well with simple materials and finishes. We're especially focused on lighting—both its appearance and the ambiance it creates—to ensure it aligns with the main concept. Additionally, we're selecting decorations that are easy to source and integrate seamlessly into the space.

ANANTARA BO PHUT PRIVATE SPA SPACE

Year: 2024
Designer: Ratchaphol Srivilai
Type: Renovation
Role: Visualization and Design
Status: Completed





Anantara Bo Phut Private Spa Space

This project presents a significant opportunity for my role as an interior designer, working with the renowned spa at Anantara Bophut Resort, Koh Samui. It's an exciting chance to implement creative ideas and transform this space into a truly fabulous destination.

For the design, we received a brief to renovate the massage rooms and restrooms into private spa spaces while preserving the signature character of Anantara. This presents a unique challenge, as the design must not only stand out but also create a serene and mindful atmosphere.

In our design approach, we focused on wall paint textures and paneling to enhance the overall aesthetic. We also incorporated elements that connect the space with the surrounding natural environment, including the aged trees. Additionally, we reconfigured the layout to improve functionality, ensuring every corner is thoughtfully designed with detailed finishing elements.

For the ambiance of the space, we carefully selected the appropriate lighting temperatures and strategically placed fixtures to complement the colors and design elements. This ensures a cohesive overall look while preserving the signature character of Anantara Bophut.

Smilow Cafe b.2.

Year: 2022
Designer: Ratchaphol Srivilai
Type: New Built
Role: Visualization and Design
Status: Completed

"Make It Tasty" is the motto for this project. After the success of Smilow Cafe B.1, the owner was inspired to expand with more branches, taking the concept in a new direction with a focus on bakery and pastry. The vision is centered around the idea: "The Best Bakery and Best Coffee to Make You Happiest."



selected work



This project is rich in detail across every space, from grid ceilings and wall decorations to carefully selected furniture, built-in fixtures, and color palettes. The main idea is to ensure that every element in this space feels thoughtfully crafted, seamlessly blending with the festive atmosphere throughout the year. We aim to engage customers by inviting them to be part of the bakery process, making the café experience more interactive. In this concept, the café serves as the main course, with customers as the secret ingredient that perfects every dish.

21



Smilow Cafe b.2.

After we brought everything together, the result was a great success, earning many positive reviews from customers and paving the way for a new café venture in Lang Suan, Chumphon. This project stands out as one of the highlights of my café design career, elevating my skills to a new level. It showed me that designing a café isn't just about aesthetics it's about the experience and what happens beyond the surface.





Si Chon Camp.

Year: 2024
Designer: Ratchaphol Srivilai
Type: Ideas
Role: Visualization and design
Status: Completed

"The Man with Passion Who Lets It Speak"

This project emerged from discussions on how to transform an empty space into something captivating. The location, situated next to a large canal, offers beautiful scenery and great viewpoints. Our idea is to create a relaxed space where visitors can simply park their cars, grab a beer, and unwind while enjoying the surroundings.

Our concept involves creating three main structures on the site: a bar and dining area, a main kitchen, and restrooms. Additionally, we are designating part of the plot as a camping area where visitors can set up tents and fully enjoy the space.

We chose local materials to reduce construction costs and ensure that the buildings are contemporary, easy to move, or adaptable for future changes in line with the business plan. Additionally, we selected simple yet distinctive design elements and decorations to create a unique and standout look.





Si Chon Camp.

After presenting various ideas for this project and outlining how it would take shape and function, the owner made the final decision and informed us that they will bring this project to life next year. It's incredibly exciting to hear this and a true pleasure to be part of this initiative happening in Si-chon, Nakhon Si Thammarat.

ITVISET CAFE AND BISTRO.

Year: 2024
Designer: Ratchaphol Srivilai
Type: New Built
Role: Visualization and Design
Status: Completed





Itviset Cafe & Bistro.

“Second Chance” is the theme for this project, focusing on how to breathe new life into the space. It is our largest renovation project of 2024, with plans to transform it into a café, restaurant, co-working space, and even a hangout spot.

We began by selecting materials that would align with the envisioned identity of the space. After careful consideration, we decided on a modern industrial style, choosing a color scheme of black, grey, and white for the main elements. To create contrast, we incorporated wood and metal finishes, adding depth and texture to the overall design.

Once the direction was set, we focused on the details. For the finishes, we chose tiles and composite materials for the main areas. We also rethought the lighting to enhance the ambient atmosphere of the space, ensuring it creates an experience where customers feel connected to the building itself.

This project is currently in the construction drawing phase, with plans to be completed next year. It promises to be a significant new development in Koh Samui’s café scene, where we aim to make everything feel special and unique, moving away from the plain and ordinary designs of the past.

Landrein Cafe & Co-Working Space.

Year: 2022
Designer: Ratchaphol Srivilai
Type: Renovation
Role: Visualization and Design
Status: Completed

"Leave the Old Story Behind" is the concept for this project, which presented a unique challenge for my architecture firm due to its context. The building served as a bank office for 15 years, holding many stories within its walls. This history inspired me to develop design elements that incorporate its past, while adding new character to make the space truly stand out.



Landrein Cafe & Co-Working Space.

After finalizing a new design to make the space unique, we integrated various design elements that aligned with its context before opening it. The result has become a popular destination for digital nomads and hybrid workers, thanks to its inspiring work environment and the owner's strong sense of community. To further enhance the business, we dedicated a section of the space as a souvenir corner, generating additional revenue while creating a dynamic atmosphere that changes with festivals and seasons.



Inthanin Cafe Reservation Area.

Year: 2023
Designer: Ratchaphol Srivilai
Type: New Built
Role: Visualization and Design
Status: Completed



Banquette Seat Station

“Design Experiment” is the perfect term for this project. The owner’s brief was to create a space that functions as a coffee shop while also serving as a meeting area and a daytime hangout spot, akin to a private reservation area.

We began with a contextual analysis, considering factors like the local people, culture, and activities to ensure our design integrates seamlessly into its surroundings without appearing out of place. Based on this, we decided to use simple materials such as raw concrete, metal sheets, and wood panels as the primary design elements, blending them together to create a cohesive and inviting aesthetic.

We experimented with various materials to achieve the desired design. For instance, we flipped the metal sheets to showcase their texture as ceiling details, while using simple finishes like wood panels and raw concrete to create an extraordinary look.



Inthanin Cafe Reservation Area.

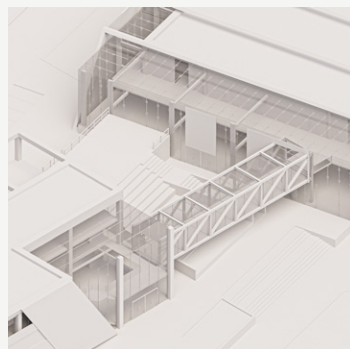
After incorporating various material experiments into the design elements, the owner was pleasantly surprised by how we selected and utilized these materials, showcasing a fresh approach to using simple resources. It was incredibly rewarding to explore new techniques in this project, pushing the boundaries and setting a new standard in my professional journey.



Year: 2020
Designer: Ratchaphol Srivilai
Type: Thesis Ideas
Role: Visualization and Design
Status: Completed

Axonomic.

The main core that connect between two building.



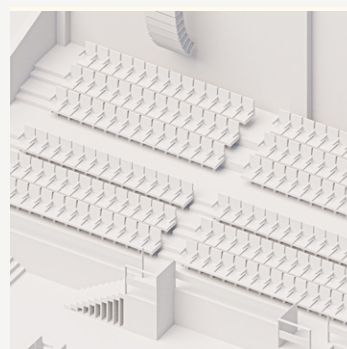
Axonomic.

The structure scanner of complex building.



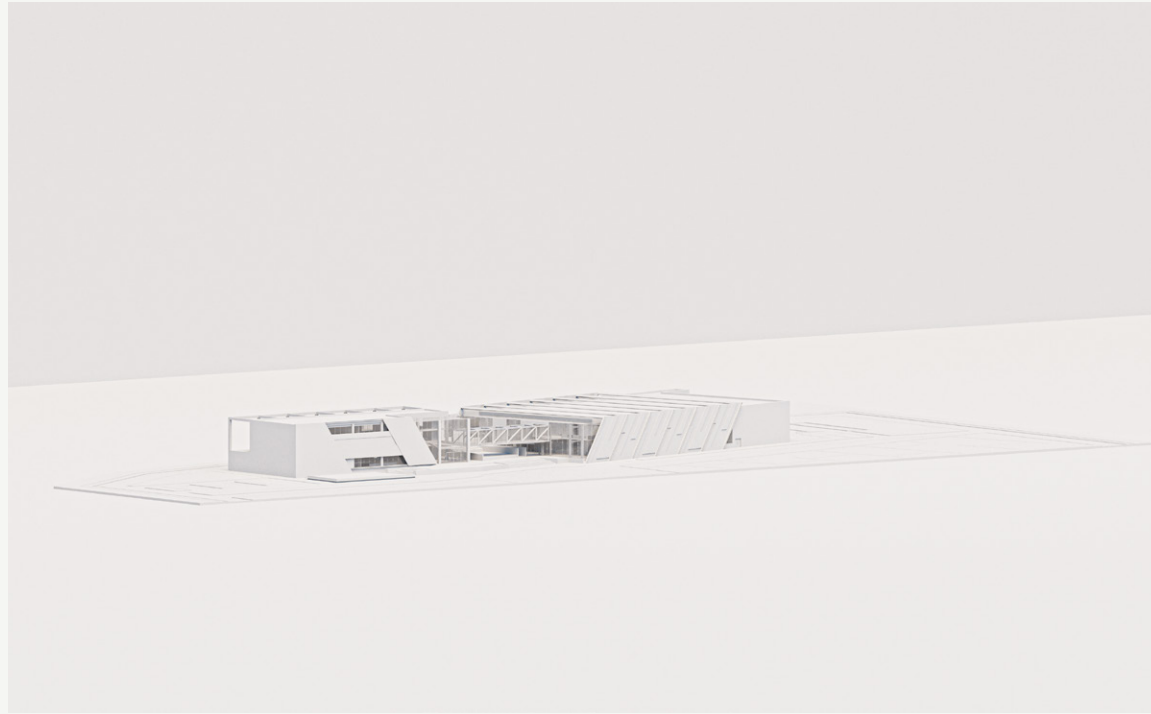
Axonomic.

The seat arrangement and how to be access.



Thesis : Phuket Entertainment and Recreation Complex.

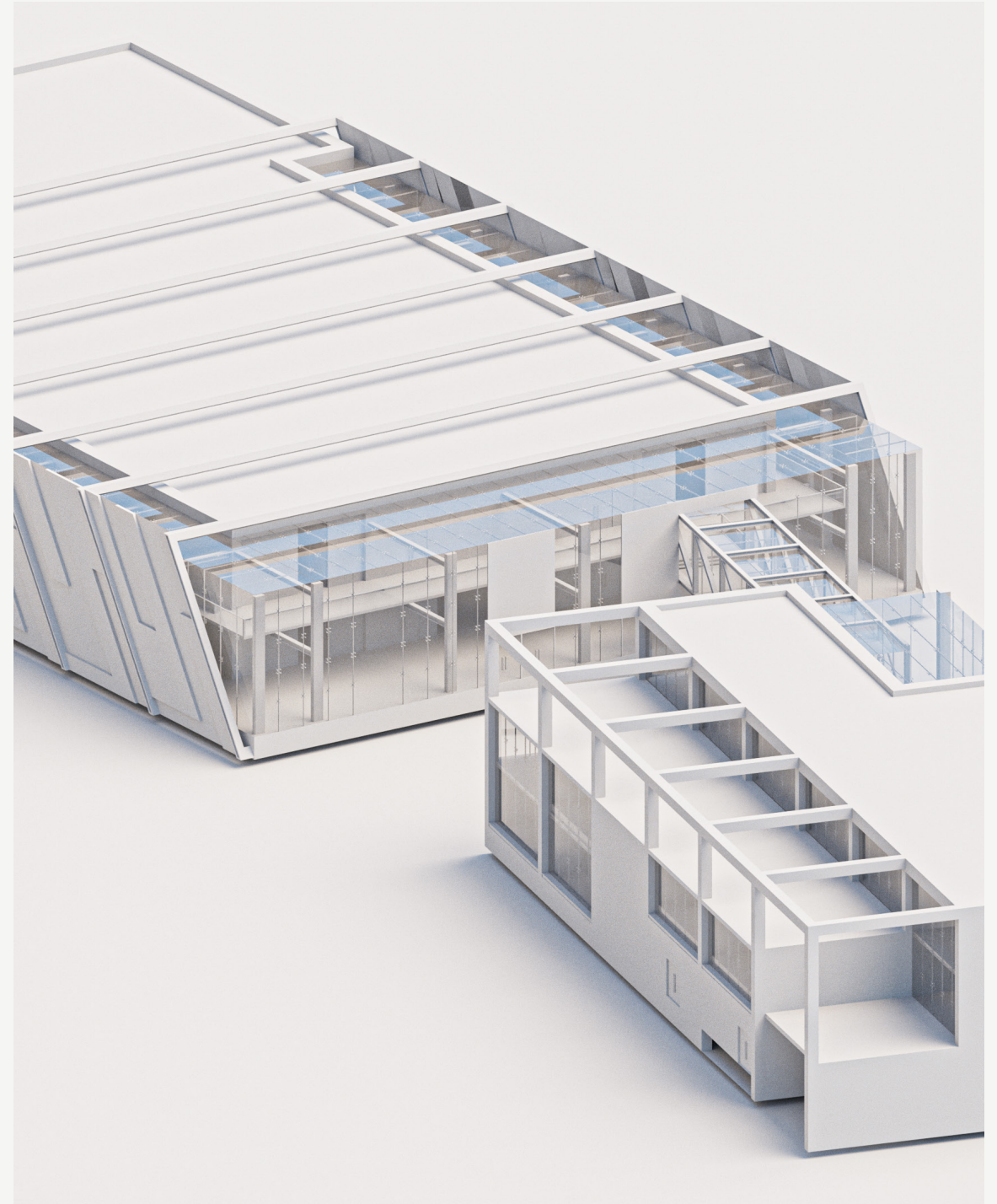
This project was inspired by my passion for music and the growing progress of the Thai music industry each year. The main objective is to expand the music and concert business beyond the capital city and into upcountry areas, starting with popular tourist destinations like Phuket. My conceptual idea is to create a new music scene in Thailand, offering tourists a unique music-centered vacation experience. Additionally, we aim to develop a versatile recreational space that can accommodate new events and scenes in the future, while also supporting and promoting local businesses and culture.

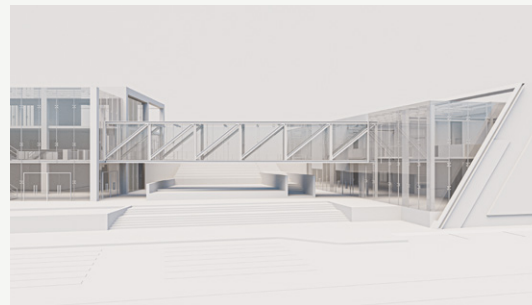
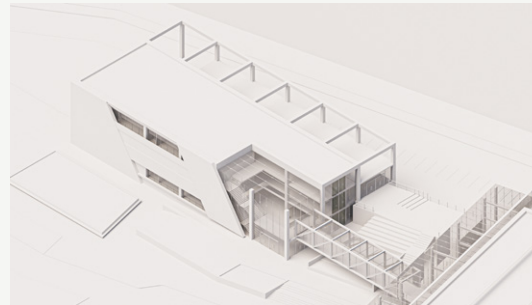
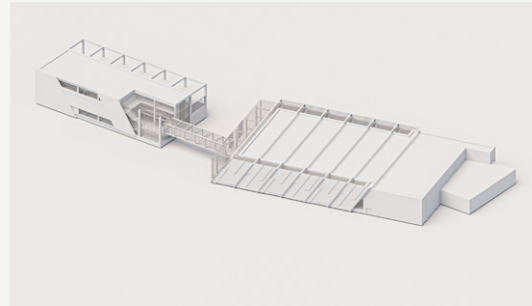
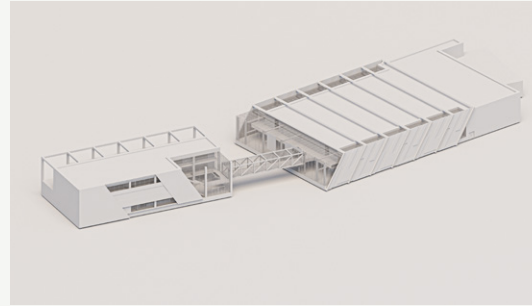
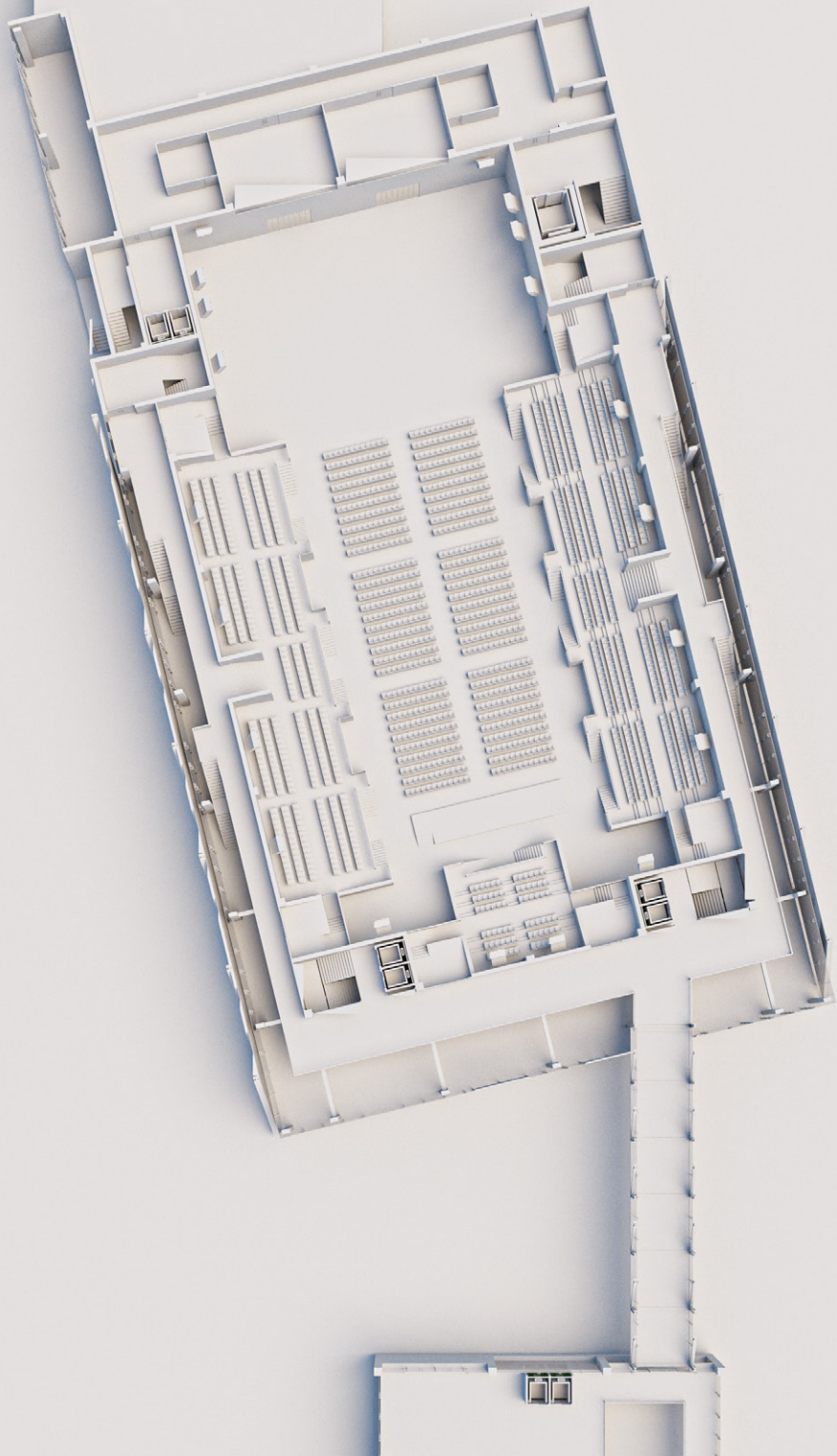


The main focus of this project is to showcase the roadmap for expanding the music scene and industry to other regions and upcountry areas in Thailand. The goal is to demonstrate that these regions are ready and prepared to host entertainment activities, paving the way for new opportunities in both the cultural and business sectors.

Regarding the conceptual design, I considered how to address potential culture shock that might arise once this project becomes a reality. I began by exploring the local context and traditional customs of Phuket, seamlessly blending these elements into the design.

**“I wish music to help with
burdens of life and help you
release your happiness to other”**





Phuket Entertainment and Recreation Complex.

Once this project is completed, I dream of seeing it come to life. It would be a great honor for me to have played a small role in this significant movement for the firm, contributing to such a big vision. I am proud to be a voice for our region, showing that we are always ready for new opportunities.