

2022-2025

PORTFOLIO

INTERIOR DESIGN



PHIMTHIP WILAIWAN

ABOUTE



PHIMTHIP WILAIWAN

In every project, I put a great deal of effort into dedicating my thoughts and ideas to creating designs that align perfectly with the space. I continuously seek new knowledge, learn, and grow alongside each project to ensure that the final design reaches its highest potential.

PRESONAL

Birth : 03 March 2002

Nationality : Thai

Languages : Thai, English (Basic)

EDUCATION

2020-2025 Bachelor Degrees
Bachelor of Architecture Program in Interior Architecture
mahasarakham university

2017-2020 Senior high school
Narinukun School

SOFTWARES SKILLS

DRAFTING & 3D MODELING

- Autocad | Skechup | LayOut
- 3D max (Beginner level)

VISUALIZING

- Enscape | 5D Render | Vray

ADOBE CREATIVE SUITE

- Photoshop | Premiere Pro
Illustrator (Beginner level)

MS Office

- Word | PowerPoint | Excel (Basic)

Contact

☎ 093-356-3918

✉ phimthip.3@gmail.com

📍 36/1 Chi Thuan, Khuang Nai, Ubon Ratchathani, 34150

EXPERIENCE

2024 **Interior Architecture Internship at LIRA design Bangkok**
Feb. - Jun.
Project/Work Type: Housing Estate, Office
Duration: 82 days (4 moths) throughout my internship, I contributed to the workflow of a total of 5 projects.

- **Assigned** to draft the THE RIVER ARK UBON sample house, responsible for creating construction drawings, extracting material quantities, and assisting in material selection.
- **Assisted** in preliminary design, model creation, and rendering for the Lat Krabang Kindergarten School Design Competition project.
- **Assisted** in detailed drawings of walls and furniture, render adjustments, specifications, and pantry design for the TIPCO Tower office project.
- **Assigned** to design Khun Bom's office in TIPCO Tower, conducting research on the client and users to guide the design process.
- **Assigned** to the PURI Lam Luk Ka Klong 7 sample house project, responsible for drafting floor plans, elevations, sections, material selection details, creating material boards, preparing BOQ, assisting in the preliminary design, and rendering.

ANALOGUE SKILLS

- Teamwork
- Communication
- Time Management
- co-ordination

ARCHIVEMENT

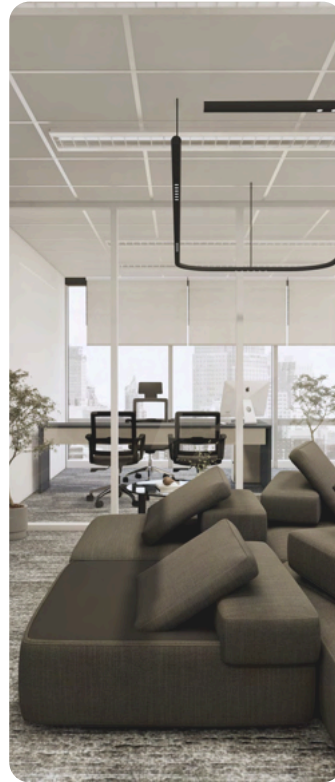
- Awarded 3rd place in The Best Thesis in Interior Architecture of the Year 2024 for the thesis titled "Interior Architectural Design Proposal Design in The Orient Express Hotel" organized by the Faculty of Architecture, Urban Design & Creative Arts, MSU.

01



THESIS

02



INTERNSHIP

03



PROJECT

04



SKETCH DESIGN

YEARS / 2024-2025

TYPE / HOTEL

LOCATION / Hua Hin, Prachuap Khiri Khan

PROJECT INFO : This thesis presents a Interior Achitectural Design Proposal in the Orient Express Hotel, part of the Accor Hotels group.

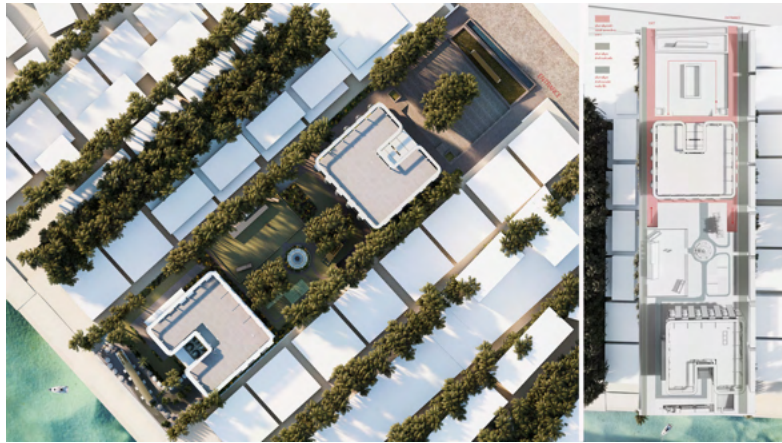
01



Accor Hotels launched the 'Internationale des Grands Hôtels' campaign with the aim of renovating the Orient Express train. The inspiration came from the luxury of the train and the lifestyle experienced aboard the Orient Express, which was then translated into the concept of a hotel.

EXTERIOR

83/181 Soi Huathanon, 23 Khaotakiap Hua Hin Road, ตำบล หนองแก อำเภอหัวหิน ประจวบคีรีขันธ์ พื้นที่ 15,068.33 ตารางเมตร



exterior Design process



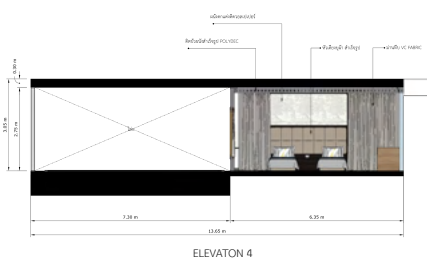
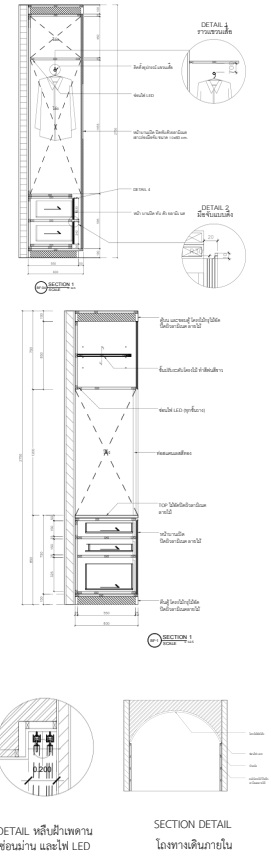
The lines of the train, whether long or curved, were translated into the design of a 6-story building. The horizontal lines were transformed into vertical ones to suit the building's structure, which were then used to design the building's façade.



"Additionally, the hotel atmosphere is infused with the essence of the train by incorporating a train car into the project along the waterfront, creating a space called the CAR LOUNGE. Users can sit, have drinks, and enjoy meals inside the train.



SECTION DETAIL





SECTION DETAIL



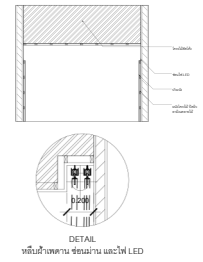
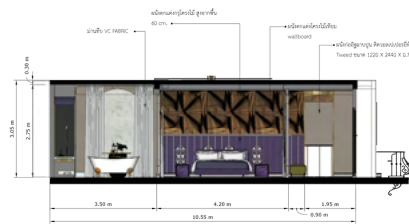


ELEVATION 1

ELEVATION 2

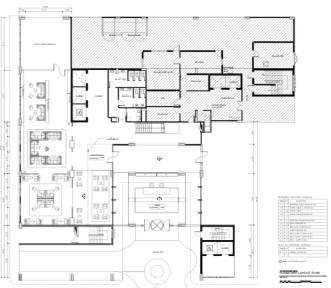
ELEVATION 3

ELEVATION 4



LOBBY

The design blends the hotel lobby with a train station, creating a space that reflects luxury and modernity.



FLOOR SPEC

- กระเบื้อง GP MINERAL WHITE 11608 (POLI) 28x24 ซม. ขนาด Cotto ขนาด 24"x24"/60x60cm
- พื้นผนังสูงลิ้น 10 มม. สีเทา
- กระเบื้อง GP 60x60 แฉกๆ 4x1 (V3) สีหิน PM ขนาด 60x60 ซม. ขนาด 24"x24"/60x60cm

พื้นที่บริการทั่วไป

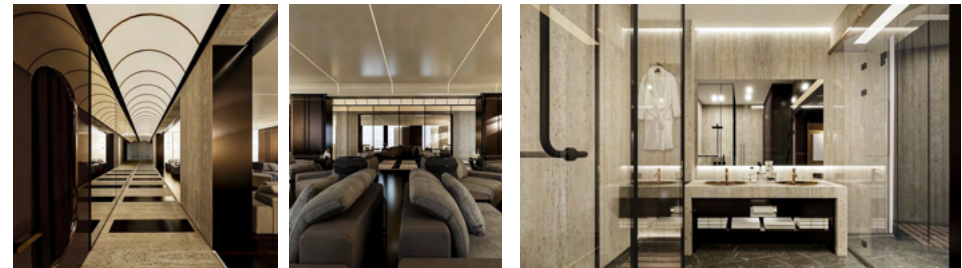
พวงกบประตู ทุ่น
ผนังผนังไม้สัก

fabric: โทนธรรมชาติ หรือโทนสี



SPA

Spa on the Route offers tranquility and simplicity with a touch of luxury, providing a premium experience.



FLOOR SPEC

- หินธรรมชาติสีเทาเข้ม
- ผนังไม้สัก
- กระเบื้องแกรนิตโต้
- กระเบื้องแกรนิตโต้

หินธรรมชาติสีเทาเข้ม

ผนังไม้สัก

กระเบื้องแกรนิตโต้

กระเบื้องแกรนิตโต้

FLOOR SPEC

- หินธรรมชาติสีเทาเข้ม
- ผนังไม้สัก
- Stone Veneer

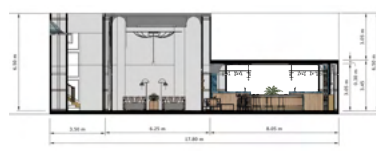
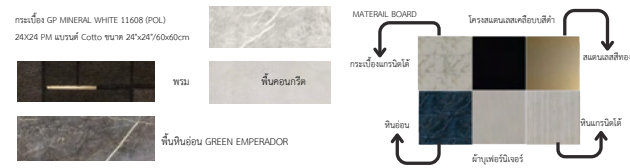
หินธรรมชาติสีเทาเข้ม

ผนังไม้สัก

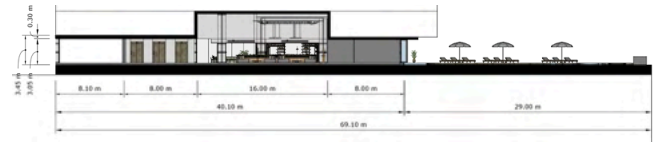
Stone Veneer

LOUNGE

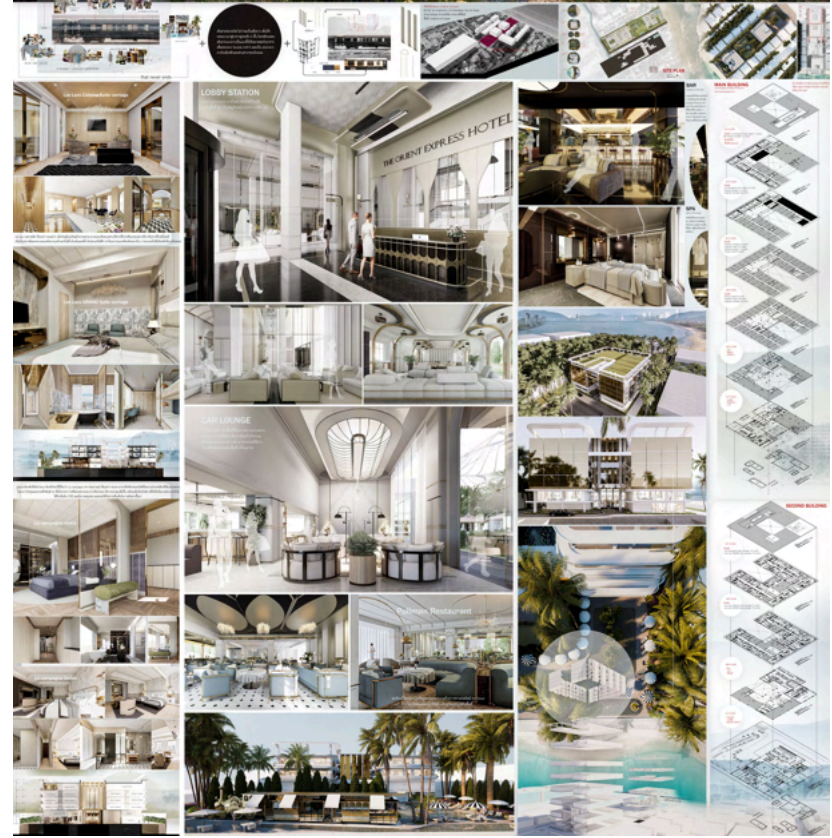
CAR LOUNGE is a space designed for relaxation and fun, offering a leisurely experience with drinks, activities, the sea, and gardens.



ELEVATION 1



ELEVATION 2





1. THE RIVER UBON

The design of the sample house for River Ubon follows the List of Drawings.

FIG. NO.	DESCRIPTION	FIG. NO.	DESCRIPTION	FIG. NO.	DESCRIPTION
01-00-01	GENERAL DESCRIPTION	01-00-02	ELEVATION	01-00-03	BUILT-IN FURNITURE
01-00-04	PLAN	01-00-05	SECTION 1	01-00-06	SECTION 2
01-00-07	PARTIAL ELEVATION 1	01-00-08	PARTIAL ELEVATION 2	01-00-09	SECTION 3
01-00-10	PARTIAL ELEVATION 3	01-00-11	PARTIAL ELEVATION 4	01-00-12	SECTION 4
01-00-13	PARTIAL ELEVATION 5	01-00-14	PARTIAL ELEVATION 6	01-00-15	SECTION 5
01-00-16	PARTIAL ELEVATION 7	01-00-17	PARTIAL ELEVATION 8	01-00-18	SECTION 6
01-00-19	PARTIAL ELEVATION 9	01-00-20	PARTIAL ELEVATION 10	01-00-21	SECTION 7
01-00-22	PARTIAL ELEVATION 11	01-00-23	PARTIAL ELEVATION 12	01-00-24	SECTION 8
01-00-25	PARTIAL ELEVATION 13	01-00-26	PARTIAL ELEVATION 14	01-00-27	SECTION 9
01-00-28	PARTIAL ELEVATION 15	01-00-29	PARTIAL ELEVATION 16	01-00-30	SECTION 10
01-00-31	PARTIAL ELEVATION 17	01-00-32	PARTIAL ELEVATION 18	01-00-33	SECTION 11
01-00-34	PARTIAL ELEVATION 19	01-00-35	PARTIAL ELEVATION 20	01-00-36	SECTION 12
01-00-37	PARTIAL ELEVATION 21	01-00-38	PARTIAL ELEVATION 22	01-00-39	SECTION 13
01-00-40	PARTIAL ELEVATION 23	01-00-41	PARTIAL ELEVATION 24	01-00-42	SECTION 14
01-00-43	PARTIAL ELEVATION 25	01-00-44	PARTIAL ELEVATION 26	01-00-45	SECTION 15
01-00-46	PARTIAL ELEVATION 27	01-00-47	PARTIAL ELEVATION 28	01-00-48	SECTION 16
01-00-49	PARTIAL ELEVATION 29	01-00-50	PARTIAL ELEVATION 30	01-00-51	SECTION 17
01-00-52	PARTIAL ELEVATION 31	01-00-53	PARTIAL ELEVATION 32	01-00-54	SECTION 18
01-00-55	PARTIAL ELEVATION 33	01-00-56	PARTIAL ELEVATION 34	01-00-57	SECTION 19
01-00-58	PARTIAL ELEVATION 35	01-00-59	PARTIAL ELEVATION 36	01-00-60	SECTION 20
01-00-61	PARTIAL ELEVATION 37	01-00-62	PARTIAL ELEVATION 38	01-00-63	SECTION 21
01-00-64	PARTIAL ELEVATION 39	01-00-65	PARTIAL ELEVATION 40	01-00-66	SECTION 22
01-00-67	PARTIAL ELEVATION 41	01-00-68	PARTIAL ELEVATION 42	01-00-69	SECTION 23
01-00-70	PARTIAL ELEVATION 43	01-00-71	PARTIAL ELEVATION 44	01-00-72	SECTION 24
01-00-73	PARTIAL ELEVATION 45	01-00-74	PARTIAL ELEVATION 46	01-00-75	SECTION 25
01-00-76	PARTIAL ELEVATION 47	01-00-77	PARTIAL ELEVATION 48	01-00-78	SECTION 26
01-00-79	PARTIAL ELEVATION 49	01-00-80	PARTIAL ELEVATION 50	01-00-81	SECTION 27
01-00-82	PARTIAL ELEVATION 51	01-00-83	PARTIAL ELEVATION 52	01-00-84	SECTION 28
01-00-85	PARTIAL ELEVATION 53	01-00-86	PARTIAL ELEVATION 54	01-00-87	SECTION 29
01-00-88	PARTIAL ELEVATION 55	01-00-89	PARTIAL ELEVATION 56	01-00-90	SECTION 30
01-00-91	PARTIAL ELEVATION 57	01-00-92	PARTIAL ELEVATION 58	01-00-93	SECTION 31
01-00-94	PARTIAL ELEVATION 59	01-00-95	PARTIAL ELEVATION 60	01-00-96	SECTION 32
01-00-97	PARTIAL ELEVATION 61	01-00-98	PARTIAL ELEVATION 62	01-00-99	SECTION 33
01-00-100	PARTIAL ELEVATION 63	01-00-101	PARTIAL ELEVATION 64	01-00-102	SECTION 34
01-00-103	PARTIAL ELEVATION 65	01-00-104	PARTIAL ELEVATION 66	01-00-105	SECTION 35
01-00-106	PARTIAL ELEVATION 67	01-00-107	PARTIAL ELEVATION 68	01-00-108	SECTION 36
01-00-109	PARTIAL ELEVATION 69	01-00-110	PARTIAL ELEVATION 70	01-00-111	SECTION 37
01-00-112	PARTIAL ELEVATION 71	01-00-113	PARTIAL ELEVATION 72	01-00-114	SECTION 38
01-00-115	PARTIAL ELEVATION 73	01-00-116	PARTIAL ELEVATION 74	01-00-117	SECTION 39
01-00-118	PARTIAL ELEVATION 75	01-00-119	PARTIAL ELEVATION 76	01-00-120	SECTION 40
01-00-121	PARTIAL ELEVATION 77	01-00-122	PARTIAL ELEVATION 78	01-00-123	SECTION 41
01-00-124	PARTIAL ELEVATION 79	01-00-125	PARTIAL ELEVATION 80	01-00-126	SECTION 42
01-00-127	PARTIAL ELEVATION 81	01-00-128	PARTIAL ELEVATION 82	01-00-129	SECTION 43
01-00-130	PARTIAL ELEVATION 83	01-00-131	PARTIAL ELEVATION 84	01-00-132	SECTION 44
01-00-133	PARTIAL ELEVATION 85	01-00-134	PARTIAL ELEVATION 86	01-00-135	SECTION 45
01-00-136	PARTIAL ELEVATION 87	01-00-137	PARTIAL ELEVATION 88	01-00-138	SECTION 46
01-00-139	PARTIAL ELEVATION 89	01-00-140	PARTIAL ELEVATION 90	01-00-141	SECTION 47
01-00-142	PARTIAL ELEVATION 91	01-00-143	PARTIAL ELEVATION 92	01-00-144	SECTION 48
01-00-145	PARTIAL ELEVATION 93	01-00-146	PARTIAL ELEVATION 94	01-00-147	SECTION 49
01-00-148	PARTIAL ELEVATION 95	01-00-149	PARTIAL ELEVATION 96	01-00-150	SECTION 50
01-00-151	PARTIAL ELEVATION 97	01-00-152	PARTIAL ELEVATION 98	01-00-153	SECTION 51
01-00-154	PARTIAL ELEVATION 99	01-00-155	PARTIAL ELEVATION 100	01-00-156	SECTION 52
01-00-157	PARTIAL ELEVATION 101	01-00-158	PARTIAL ELEVATION 102	01-00-159	SECTION 53
01-00-160	PARTIAL ELEVATION 103	01-00-161	PARTIAL ELEVATION 104	01-00-162	SECTION 54
01-00-163	PARTIAL ELEVATION 105	01-00-164	PARTIAL ELEVATION 106	01-00-165	SECTION 55
01-00-166	PARTIAL ELEVATION 107	01-00-167	PARTIAL ELEVATION 108	01-00-168	SECTION 56
01-00-169	PARTIAL ELEVATION 109	01-00-170	PARTIAL ELEVATION 110	01-00-171	SECTION 57
01-00-172	PARTIAL ELEVATION 111	01-00-173	PARTIAL ELEVATION 112	01-00-174	SECTION 58
01-00-175	PARTIAL ELEVATION 113	01-00-176	PARTIAL ELEVATION 114	01-00-177	SECTION 59
01-00-178	PARTIAL ELEVATION 115	01-00-179	PARTIAL ELEVATION 116	01-00-180	SECTION 60
01-00-181	PARTIAL ELEVATION 117	01-00-182	PARTIAL ELEVATION 118	01-00-183	SECTION 61
01-00-184	PARTIAL ELEVATION 119	01-00-185	PARTIAL ELEVATION 120	01-00-186	SECTION 62
01-00-187	PARTIAL ELEVATION 121	01-00-188	PARTIAL ELEVATION 122	01-00-189	SECTION 63
01-00-190	PARTIAL ELEVATION 123	01-00-191	PARTIAL ELEVATION 124	01-00-192	SECTION 64
01-00-193	PARTIAL ELEVATION 125	01-00-194	PARTIAL ELEVATION 126	01-00-195	SECTION 65
01-00-196	PARTIAL ELEVATION 127	01-00-197	PARTIAL ELEVATION 128	01-00-198	SECTION 66
01-00-199	PARTIAL ELEVATION 129	01-00-200	PARTIAL ELEVATION 130	01-00-201	SECTION 67
01-00-202	PARTIAL ELEVATION 131	01-00-203	PARTIAL ELEVATION 132	01-00-204	SECTION 68
01-00-205	PARTIAL ELEVATION 133	01-00-206	PARTIAL ELEVATION 134	01-00-207	SECTION 69
01-00-208	PARTIAL ELEVATION 135	01-00-209	PARTIAL ELEVATION 136	01-00-210	SECTION 70
01-00-211	PARTIAL ELEVATION 137	01-00-212	PARTIAL ELEVATION 138	01-00-213	SECTION 71
01-00-214	PARTIAL ELEVATION 139	01-00-215	PARTIAL ELEVATION 140	01-00-216	SECTION 72
01-00-217	PARTIAL ELEVATION 141	01-00-218	PARTIAL ELEVATION 142	01-00-219	SECTION 73
01-00-220	PARTIAL ELEVATION 143	01-00-221	PARTIAL ELEVATION 144	01-00-222	SECTION 74
01-00-223	PARTIAL ELEVATION 145	01-00-224	PARTIAL ELEVATION 146	01-00-225	SECTION 75
01-00-226	PARTIAL ELEVATION 147	01-00-227	PARTIAL ELEVATION 148	01-00-228	SECTION 76
01-00-229	PARTIAL ELEVATION 149	01-00-230	PARTIAL ELEVATION 150	01-00-231	SECTION 77
01-00-232	PARTIAL ELEVATION 151	01-00-233	PARTIAL ELEVATION 152	01-00-234	SECTION 78
01-00-235	PARTIAL ELEVATION 153	01-00-236	PARTIAL ELEVATION 154	01-00-237	SECTION 79
01-00-238	PARTIAL ELEVATION 155	01-00-239	PARTIAL ELEVATION 156	01-00-240	SECTION 80
01-00-241	PARTIAL ELEVATION 157	01-00-242	PARTIAL ELEVATION 158	01-00-243	SECTION 81
01-00-244	PARTIAL ELEVATION 159	01-00-245	PARTIAL ELEVATION 160	01-00-246	SECTION 82
01-00-247	PARTIAL ELEVATION 161	01-00-248	PARTIAL ELEVATION 162	01-00-249	SECTION 83
01-00-250	PARTIAL ELEVATION 163	01-00-251	PARTIAL ELEVATION 164	01-00-252	SECTION 84
01-00-253	PARTIAL ELEVATION 165	01-00-254	PARTIAL ELEVATION 166	01-00-255	SECTION 85
01-00-256	PARTIAL ELEVATION 167	01-00-257	PARTIAL ELEVATION 168	01-00-258	SECTION 86
01-00-259	PARTIAL ELEVATION 169	01-00-260	PARTIAL ELEVATION 170	01-00-261	SECTION 87
01-00-262	PARTIAL ELEVATION 171	01-00-263	PARTIAL ELEVATION 172	01-00-264	SECTION 88
01-00-265	PARTIAL ELEVATION 173	01-00-266	PARTIAL ELEVATION 174	01-00-267	SECTION 89
01-00-268	PARTIAL ELEVATION 175	01-00-269	PARTIAL ELEVATION 176	01-00-270	SECTION 90
01-00-271	PARTIAL ELEVATION 177	01-00-272	PARTIAL ELEVATION 178	01-00-273	SECTION 91
01-00-274	PARTIAL ELEVATION 179	01-00-275	PARTIAL ELEVATION 180	01-00-276	SECTION 92
01-00-277	PARTIAL ELEVATION 181	01-00-278	PARTIAL ELEVATION 182	01-00-279	SECTION 93
01-00-280	PARTIAL ELEVATION 183	01-00-281	PARTIAL ELEVATION 184	01-00-282	SECTION 94
01-00-283	PARTIAL ELEVATION 185	01-00-284	PARTIAL ELEVATION 186	01-00-285	SECTION 95
01-00-286	PARTIAL ELEVATION 187	01-00-287	PARTIAL ELEVATION 188	01-00-288	SECTION 96
01-00-289	PARTIAL ELEVATION 189	01-00-290	PARTIAL ELEVATION 190	01-00-291	SECTION 97
01-00-292	PARTIAL ELEVATION 191	01-00-293	PARTIAL ELEVATION 192	01-00-294	SECTION 98
01-00-295	PARTIAL ELEVATION 193	01-00-296	PARTIAL ELEVATION 194	01-00-297	SECTION 99
01-00-298	PARTIAL ELEVATION 195	01-00-299	PARTIAL ELEVATION 196	01-00-300	SECTION 100

ภาพแสดงงานแบบบางส่วน

2. PURI ภูเก็ต ลำลูกกา คลอง 7

The design of the sample house for Phuri Lam Luk Ka Klong 7 follows the List of Drawings.

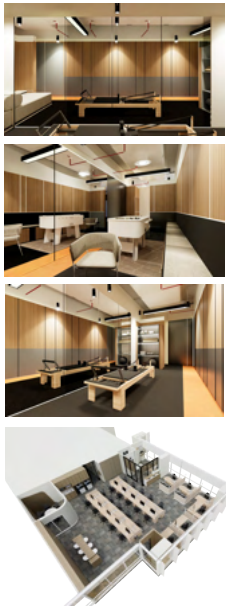
Project Information

QUANTITY : 100
 UNIT : SQUARE METERS (SQ. M)
 NATIONAL : THAILAND
 LOCATION : LAMLUKKA, KLONG 7
 PRICE : B.A.T.

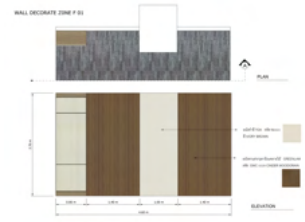
Additionally, I contributed to the preliminary design (Prelim), created 3D models, rendered the work, selected materials, and prepared cost estimates.

3. OFFICE TIPCO

PILATES AREA



PANTRY

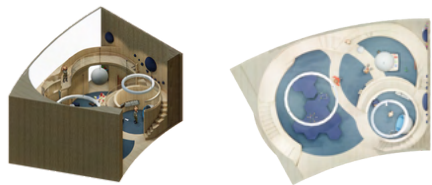


OFFICE



I was assigned to design the fitness area for PILATES in TIPCO TOWER. This involved editing the render, detailing the walls and furniture, designing the pantry area, and adding dimensions to the various sections.

4. LAT KRABANG KINDERGARTEN SCHOOL DESIGN COMPETITION PROJECT

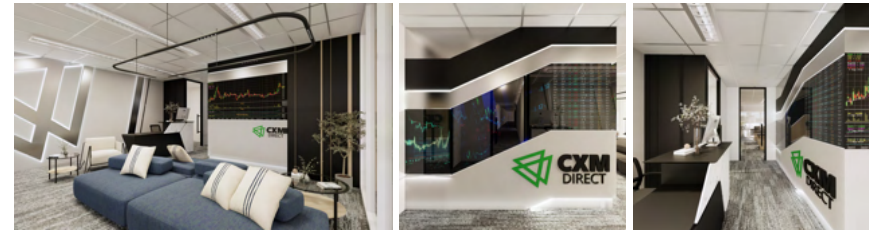


assisted in designing a kindergarten classroom, creating 3D models and rendering,



5. OFFICE គុណប័ណ្ណ

I was assigned to create the preliminary design for គុណប័ណ្ណ office, including designing, creating 3D models, and rendering the work.



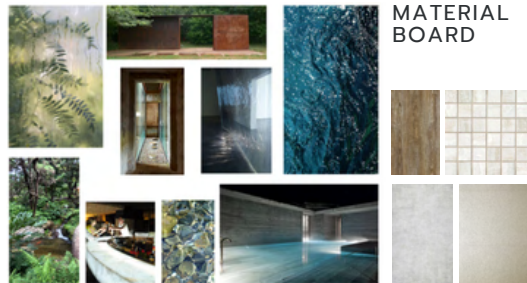
DESIGN CONCEPT

เชอร์ธารา

CHERTHARA

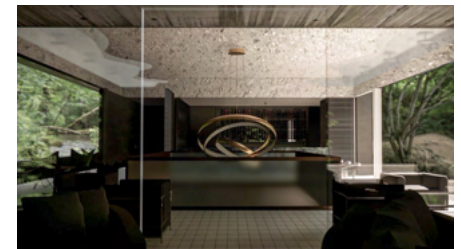
With the atmosphere of being located by the Chi River, surrounded by green trees and a cool breeze, the setting provides a relaxing and friendly vibe for relaxation and healing. The design incorporates a modern loft style, with the building originally being modern, which allowed for the integration of raw elements to blend with both the exterior and interior ambiance. The space is divided into two sections: the first floor represents "ไม้" (trees or wood), and the second floor represents "ธารา" (water). These two sections are connected through music, food, and the surrounding atmosphere. People inside the restaurant will experience a unique, harmonious feeling.

MOOD BOARD



MATERIAL BOARD

The overall atmosphere aims to create a space that captures the breeze and connects with the surrounding nature, which is why materials such as glass, wood, and exposed concrete were chosen for the design.

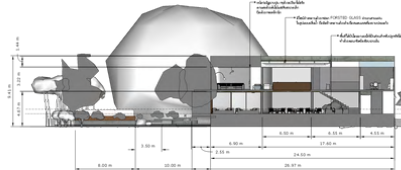
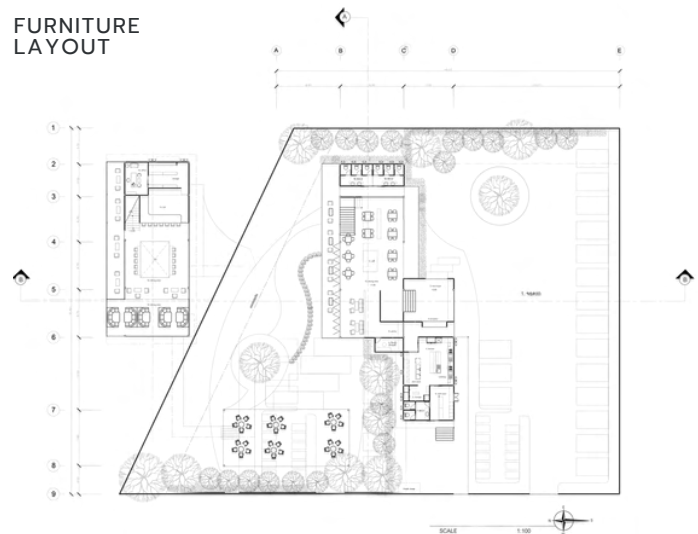


YEARS / 2022
 TYPE / RESTAURANT
 LOCATION / MAHASARAKHAM

PROJECT INFO : This project was assigned to design a riverside restaurant located along the Chi River in Maha Sarakham Province. The designer created the concept for a Thai fusion restaurant that offers both food and beverages.



FURNITURE LAYOUT



ELEVATION 1



ELEVATION 2

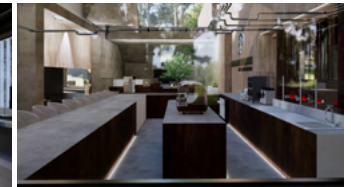


ISOMETRIC

DESIGN CONCEPT

SHADE GROWN

Coffee under the Shade refers to planting coffee beneath large trees. Similarly, this building is designed to offer coffee-related activities and learning under shaded spaces. Inside the building, plants are incorporated in areas that receive sunlight and open spaces to help with ventilation. Materials such as exposed concrete are used to retain coolness and reduce energy consumption. The space is designed to be interconnected, allowing visitors to engage in activities and learn without having to enter the learning center directly.



EXHIBITION AREA

OFFICE AREA

CAFE

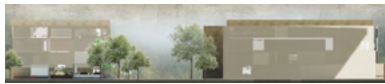


ELEVATION 1

ELEVATION 2



EXTERIOR ELEVATION



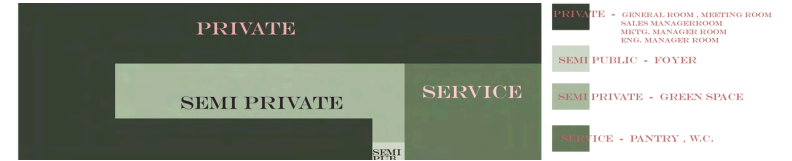
ELEVATION 3

ELEVATION 4



DESIGN CONCEPT

ZONE



FURNITURE LAYOUT



COFFEE COMMUNITY

THE CONCEPT OF A COFFEE COMMUNITY SERVES AS THE MAIN IDEA FOR THIS PROJECT.

For this office space, the concept is 'heart of the community,' where a green space is placed at the center to serve as a distribution point for movement to various office departments. Glass walls are used on the interior to connect the space with the green area, helping users reduce stress and providing a space for eye rest, which promotes relaxation and comfort. The green space acts as the core element, fostering communication and interaction among partners.



PANTRY

Thesis of The Year 2024

I was selected at the department level to participate in the Thesis of The Year 2024 competition, organized by the Faculty of Architecture, Urban Design & Creative Arts, MSU. I received third place in the Interior Architecture category.



ภาพกิจกรรม

ACTIVITIES

I participated in a design competition for the public space of the old Bus Station in Khon Kaen, organized by the **เขตดีดี** Architects Association. I was selected as one of the top 15 teams and had the opportunity to present my work in Khon Kaen.




ผลงานที่ส่งเข้าประกวด


T H A N K Y O U

PHIMTHIP WILAIWAN

CONTACT

 093-356-3918

 phimthip.3@gmail.com

 36/1 Chi Thuan, Khuang Nai, Ubon Ratchathani, 34150